

# C6000/ C6500 Feature Overview



- Reliable performance – Epson engineered for demanding mission critical applications
- First printer specifically designed as a color upgrade to thermal transfer
- Fast time to first label – Fast throughput up to 5 in/sec
- Astounding image quality – up to 1200 DPI with variable droplet sizes
- Seamless integration – ZPL-II, Major Middleware, SAP®, Windows®, Mac®, Linux
- Remote Printer Management – ideal for managing large fleets over network



# Model Lineup

## CW-C6500Series

(Max.8" width label)

## CW-C6000Series

(Max.4" width label)

Peeler model



Auto Cutter model



- PrecisionCore™ printhead, Serial inkjet
- 4-color water based pigment ink



PRECISIONCORE

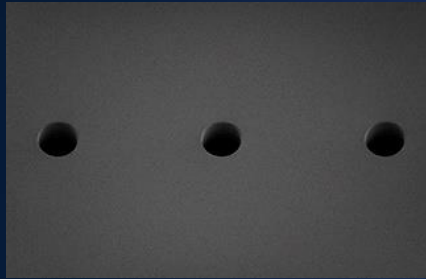


EPSON CONFIDENTIAL

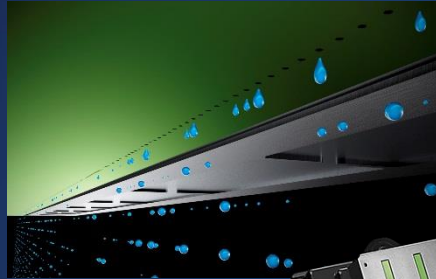


# Product Feature: PrecisionCore™ technology

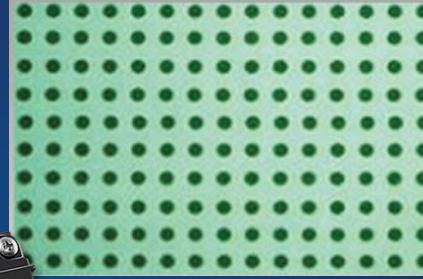
Perfectly round nozzles



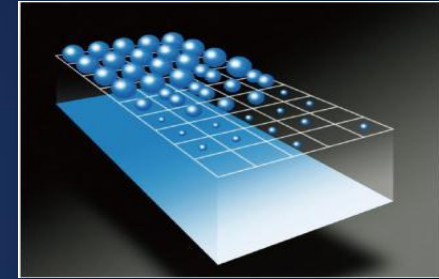
High nozzle density



Precise dots



Variable droplet size



PRECISIONCORE

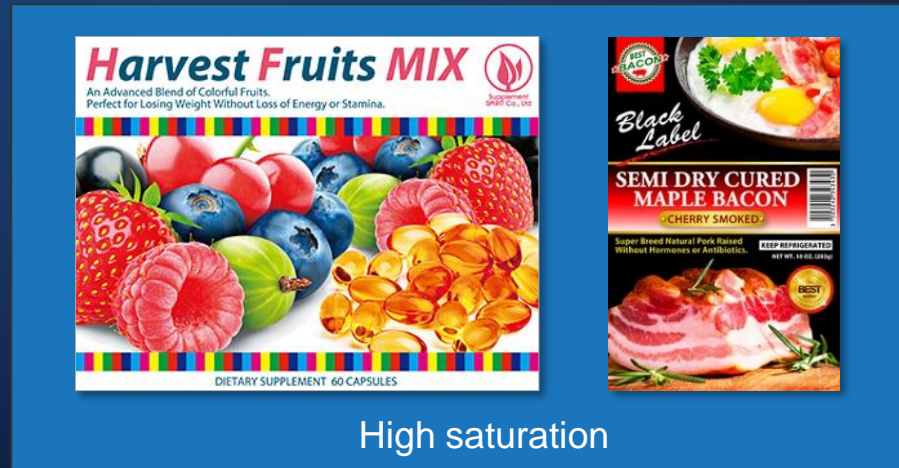
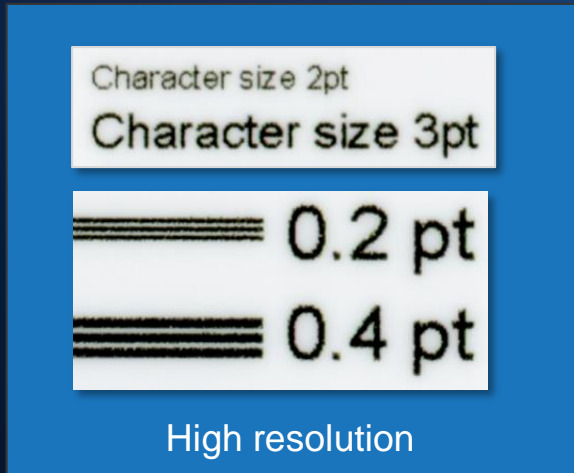
The precise dots created by the PrecisionCore™ TFP printhead's perfectly round nozzles ensure consistently superior image quality.



# Product Feature: PrecisionCore™ technology

High gloss and high quality images create beautiful labels that complement products.

- High resolution printing with PrecisionCore™ head (Max.1200x1200dpi)
  - Razor sharp barcodes, text, lines, and graphics
- High saturation color design that product image shines on



# Product Feature: Peeler

The world's first peeler equipped inkjet label printer

Prints a label & pause



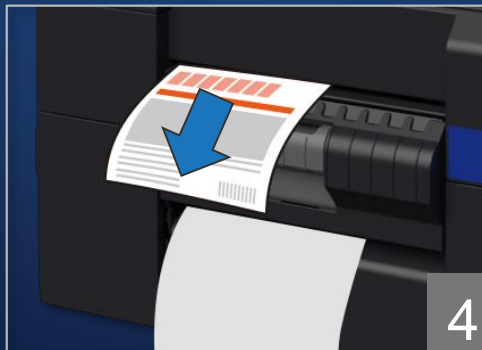
Remove the label



Label peeling sensor



Detects the label removal



Prints the next label & pause

Video



# C6000/ C6500 Specifications

Printer Specifications	C6000	C6500
Dimensions (W x D x H)	13.4" x 22.2" x 12.8"	17.5" x 20.3" x 12.8"
Printer Weight	50.7	57.3
Print Speed		
Max (in/sec)	4.7	3.3
Speed (in/sec)	3.0	1.9
Normal (in/sec)	1.9	1.3
Quality (in/sec)	0.7	0.5
Max Quality (in/sec)	0.3	0.2
Minimum Resolution (dpi)	300 x 600	
Maximum Resolution (dpi)	1200 x 1200	
Time to 1st print	Near instant	
Print Width (Max)	4.25"	8.34"
Print Length (Max)	24"	24"
Ink	UltraChrome® DL pigment ink	
Ink Capacity	80 mL/ cartridge	
Language	Esc/Label command	
Color Management	ICC profile support Spot color matching	



# C6000/ C6500 Specifications

Media Specifications	CW-C6000 (max 4" width)	CW-C6500 (max 8" width)
Paper Width (Min - Max)	1.0" - 4.4"	1.0" - 8.5"
Roll I.D.	3"	3"
Roll Maximum O.D.	8"	6"
Min Label Length (cutter version)	0.31"	0.31"
Min Label Length (peeler version)	0.50"	0.50"
Maximum Label Length	24"	24"
Peel Width Maximum	4.4"	6.7"
Compatible Media	Gloss, matte, synthetic	
Media Thickness	TBC	TBC
Rear Media Feed	Fanfold & Roll	



# C6000/ C6500 Connectivity

## Native driver



## Generally supported driver

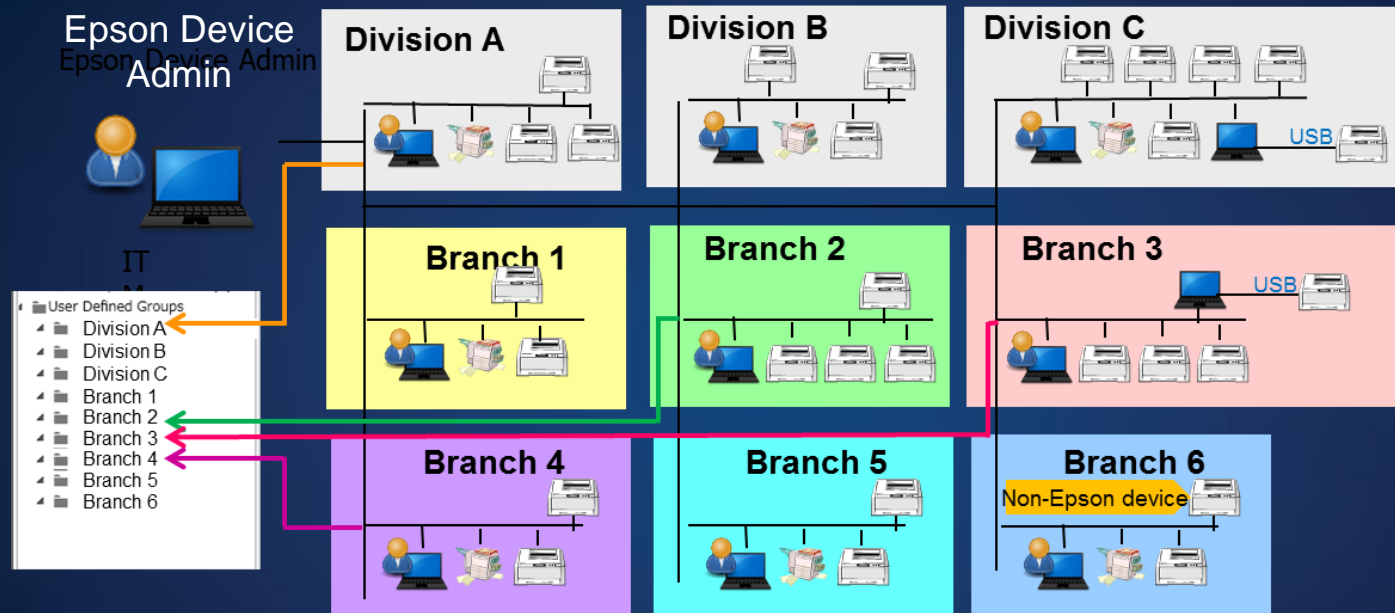


Mac OS





# Product Supports Remote Management



Some installations will have hundreds or thousands of units  
Units will be spread over multiple buildings, states, countries  
Need consistent configuration – impractical to manage one-by-one  
IT managers will be able to diagnose and correct from afar

